

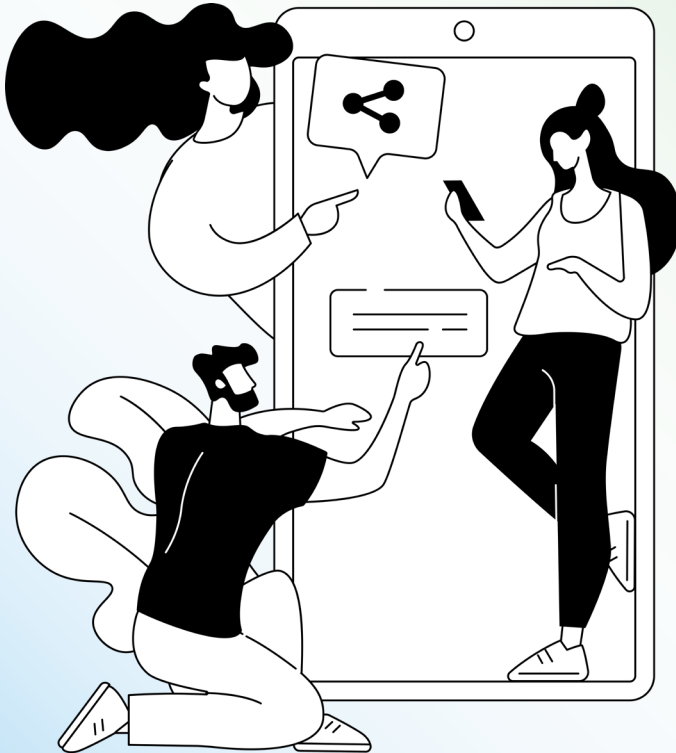


Department  
for Education

**Growing** **Up**  
in the 2020s

# Data Linkage

Information leaflet for parents/carers  
and young people



Anna Freud  
building the mental  
wellbeing of the  
next generation





## What are administrative records?

Government departments and agencies collect information about us and the services we use, such as schools and hospitals, to help improve those services. This information is stored in administrative records.

During the survey we will ask young people and their parents/carers whether they are happy to let us securely and confidentially link such records to their study responses.

## Why we want to link your study responses to administrative records

Adding information from administrative data for both the young person and parents/carers to your survey answers helps the Department for Education (DfE) and researchers build a more detailed picture of young people's

experiences and circumstances. This helps us understand the most important factors that affect young people's experiences and outcomes as they move through secondary school and will help us develop better policies. It adds value to the data collected during the interviews and surveys, without taking up any more of your time.

**Your linked survey data will be treated as confidential and only be given to approved researchers. Direct identifiers, such as names and addresses, will have been removed. Your decision about whether to allow us to add information from records will not affect your services, rights, treatment, or any health insurance. It will not affect your benefits or tax. Your information will not be used for any commercial or profit-based purpose and you will not receive any marketing information.**

## The administrative records we would like to use for data linkage

DfE already holds details about participation and achievement in school and further education as well as details about the school, college, or training centre attended. Where applicable, DfE also hold information about any higher education applications and offers. Growing up in the 2020s is commissioned by the DfE, and education records for participating young people and their parents/carers will be added to survey answers as a standard part of the study.

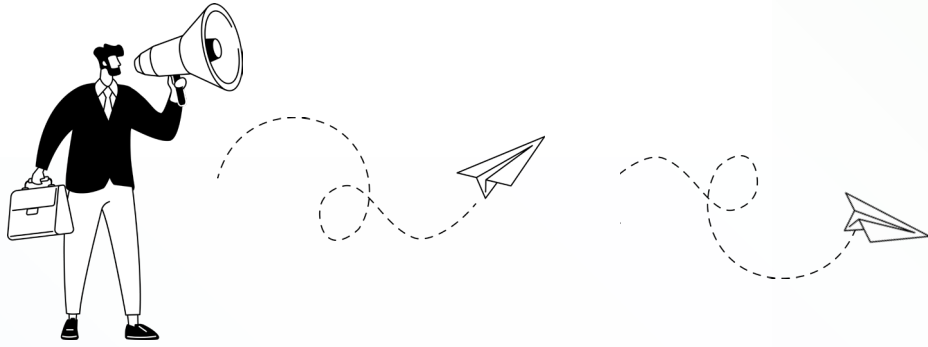
**If you (the young person and/or their parent/carer) do not want this to happen, you can let us know using the contact details at the end of this leaflet.**

## Health records (NHS)

Health is an important factor in young people's wellbeing and development. To help us understand this relationship more fully, we will ask permission to add information from the parent/carer's NHS records. These records include information about admissions or attendances at hospital, visits to a GP or other health professionals, specific conditions and prescriptions or treatment given. You do not have to agree to this, and if you choose not to, you can still stay in the study.

We plan to ask permission from young people to link their health records when they are in Year 12.





## Employment and tax information (HMRC)

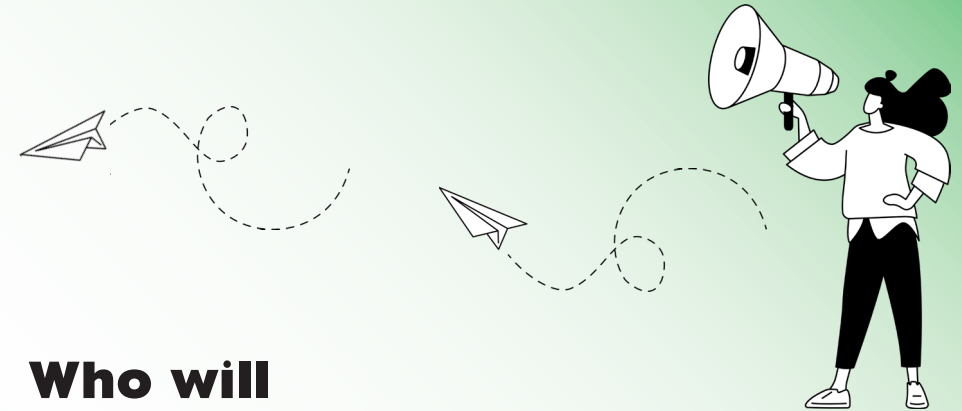
Understanding how families get on financially is an important part of understanding young people's experiences. We will therefore ask permission to link the parent/carer's records held by His Majesty's Revenue and Customs (HMRC) to the study. HMRC records include information on employment, Income Tax, Tax Credits, and Child Benefits. The records also hold information on pensions and National Insurance contributions. You do not have to agree to this, and if you choose not to, you can still stay in the study.

We plan to ask permission from young people to link their HMRC records when they are in Year 12.

## Employment programmes, benefits and pension schemes records (DWP)

Department for Work and Pensions (DWP) records hold information about participation in employment programmes, benefit receipts, and pension schemes. Linking these data records to the study would help researchers understand, and account for, the various situations that our participating families are in. During the survey, we will ask permission to link the parent/carer's DWP records but, again, you do not have to agree to this. If you choose not to, you can still stay in the study.

We plan to ask permission from young people to link their DWP records when they are in Year 12.



## Who will use the information and how?

The combined study responses and administrative information will remain confidential and will be used for **research purposes only**. Your data will not be used for marketing or commercial purposes. The information will be made available securely by DfE to researchers via the UK Data Service (UKDS), Office for National Statistics Secure Research Service (ONS SRS) or a similar trusted research repository. Access to the data will only be granted to approved researchers after a successful application to DfE. This is to make sure the information is used responsibly. Personal data identifying young people and parents/carers taking part in the study are never given to these

researchers. All information is treated in the strictest confidence in accordance with the Data Protection Act and the General Data Protection Regulation (GDPR). The privacy notice explains how we keep your information safe and can be found here: [growingup2020s.ipsos.com/privacy](https://growingup2020s.ipsos.com/privacy)

We may link to combinations of the datasets where you have provided consent for each. For example, education, income, tax and benefit records are already connected together by government departments, so we might draw on these pre-matched databases.





## What if you change your mind?

Because this study is trying to understand how young people get on in the long term, we would like to add these administrative records on an ongoing basis. This information will remain confidential and used for research purposes only. You can change your mind about adding information from these records and withdraw any of your permissions at any time, without giving us a reason, for the duration of the study. If you change your mind about adding information, any data already collected will continue to be processed unless you explicitly request that we delete it.

If you request that we delete all or any part of your data (including your personal identifiable data, survey responses and information added from administrative records), we will do so if identifying information about you or your child exists which would enable us to do this.

### Contact details:

@ [growingup2020s@ipsos.com](mailto:growingup2020s@ipsos.com)

🌐 [growingup2020s.ipsos.com](http://growingup2020s.ipsos.com)

📞 0800 182 2137